

RoboJackets - Electrical Training

Session 3 - Soldering

Electrical Training Session Materials:

<https://redmine.robojackets.org/projects/robojackets-electrical-training>

Soldering Tutorial Videos (HIGHLY Recommend Watching - EEVblog is top-notch):

<https://www.youtube.com/playlist?list=PL2862BF3631A5C1AA>

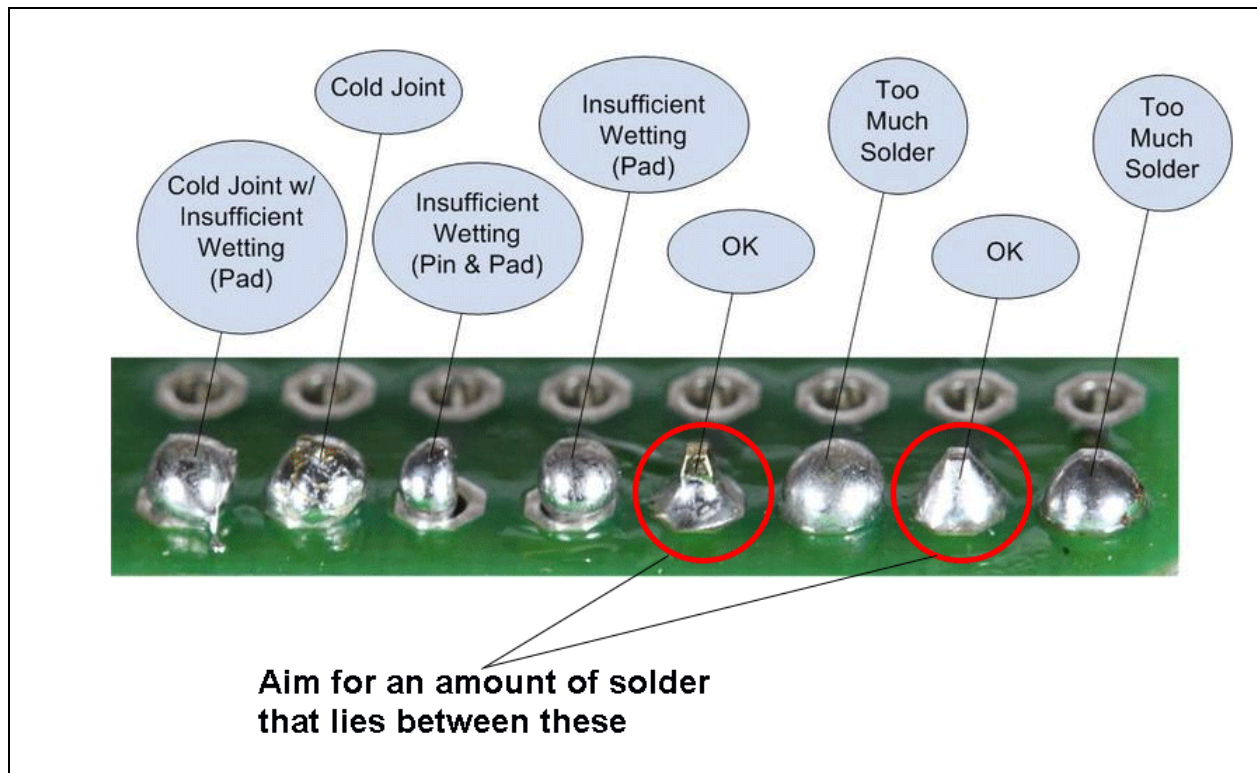


Figure 1. Common results from soldering through-hole component leads. Applying the correct amount of solder is critical for proper functioning of the solder joint.

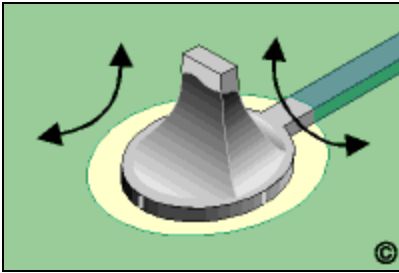


Figure 2. An ideal soldering joint is shown here.

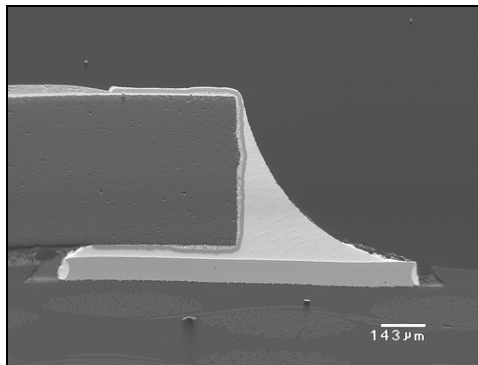


Figure 3. An ideal surface-mount device (SMD) soldering joint is shown here.

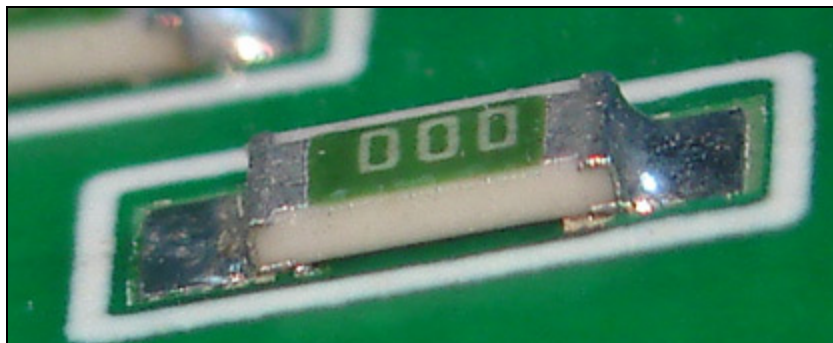


Figure 4. This is an example of another ideal SMD soldering joint. Additional flux is almost always required for SMD applications.