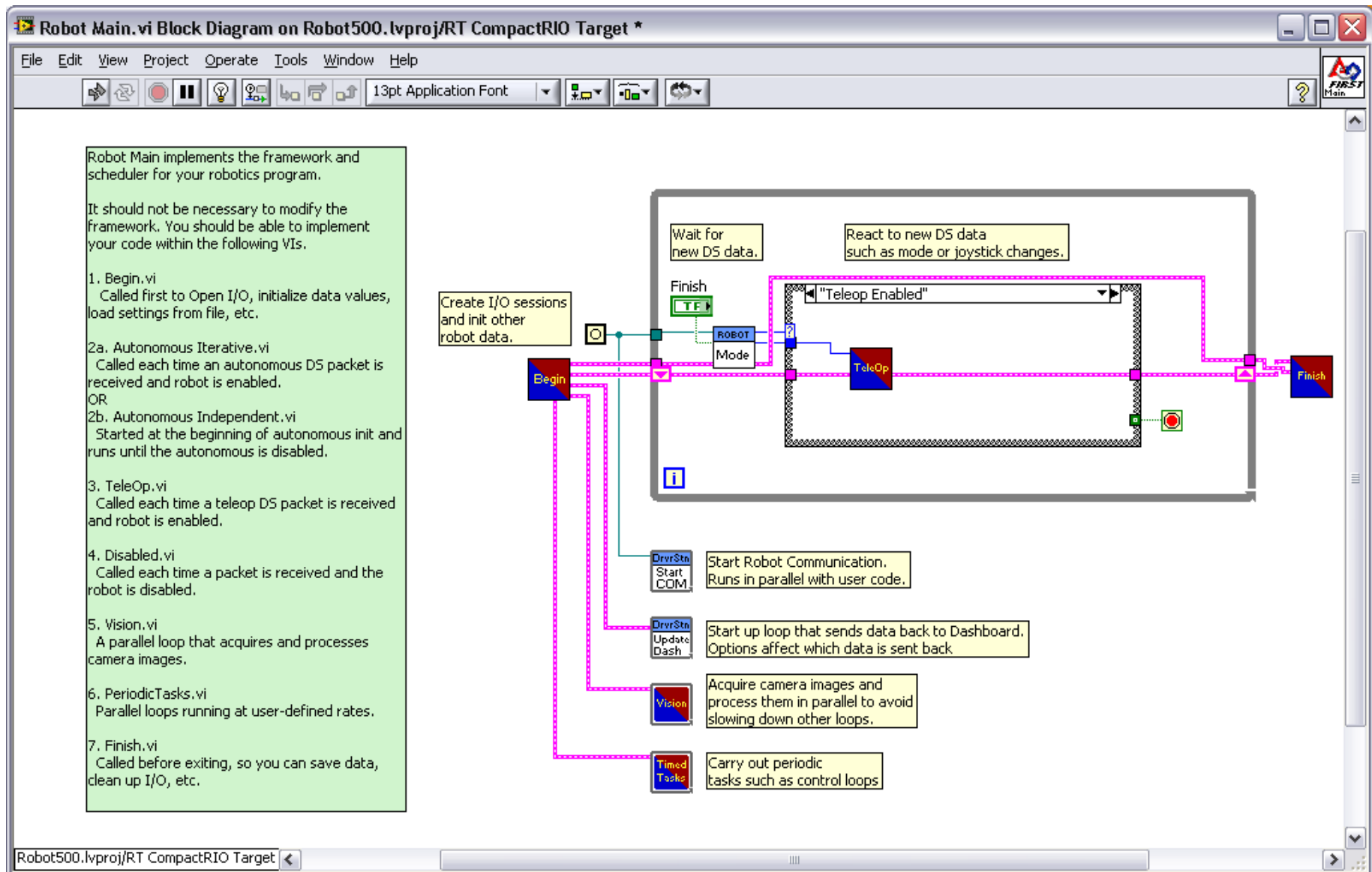
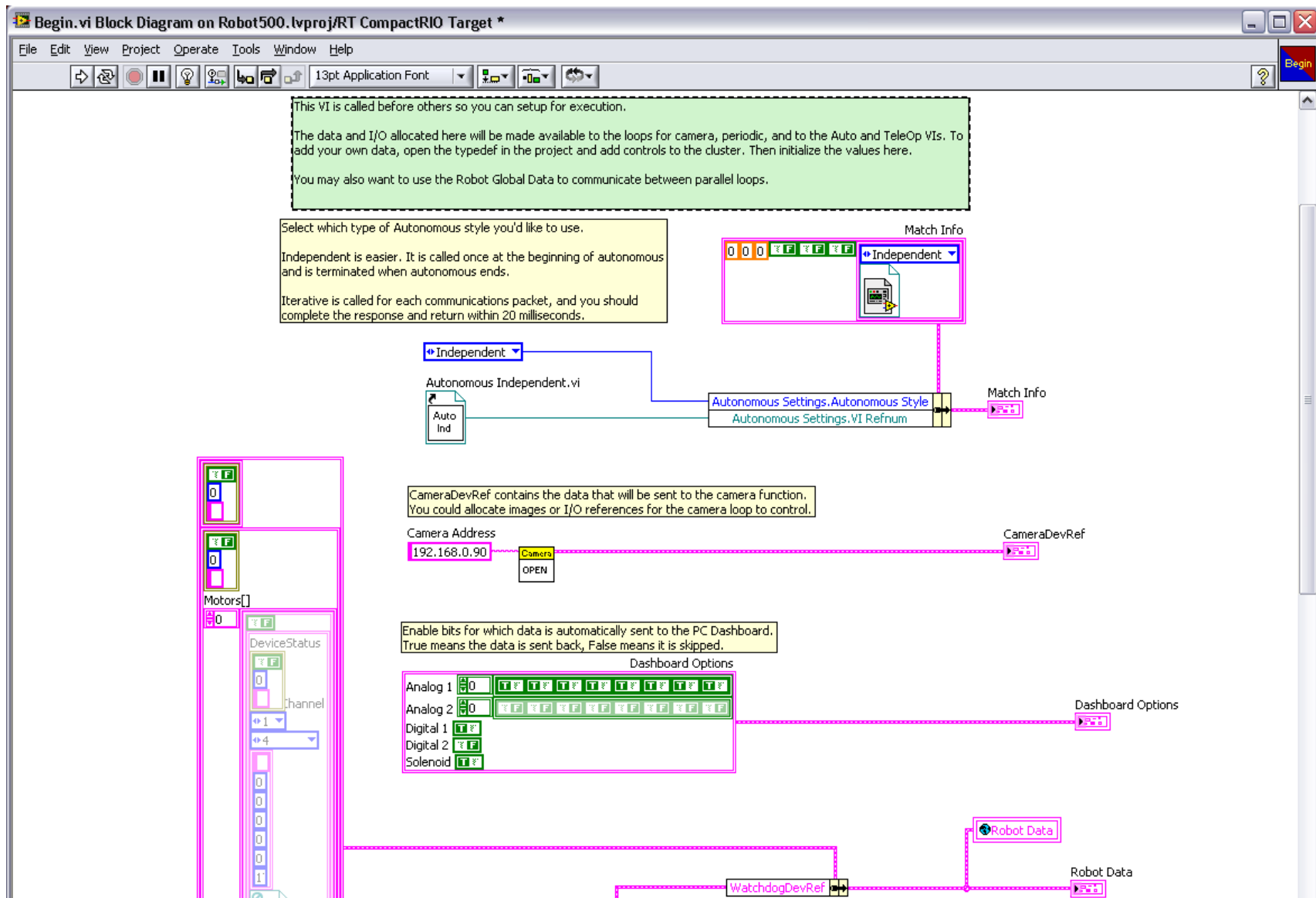


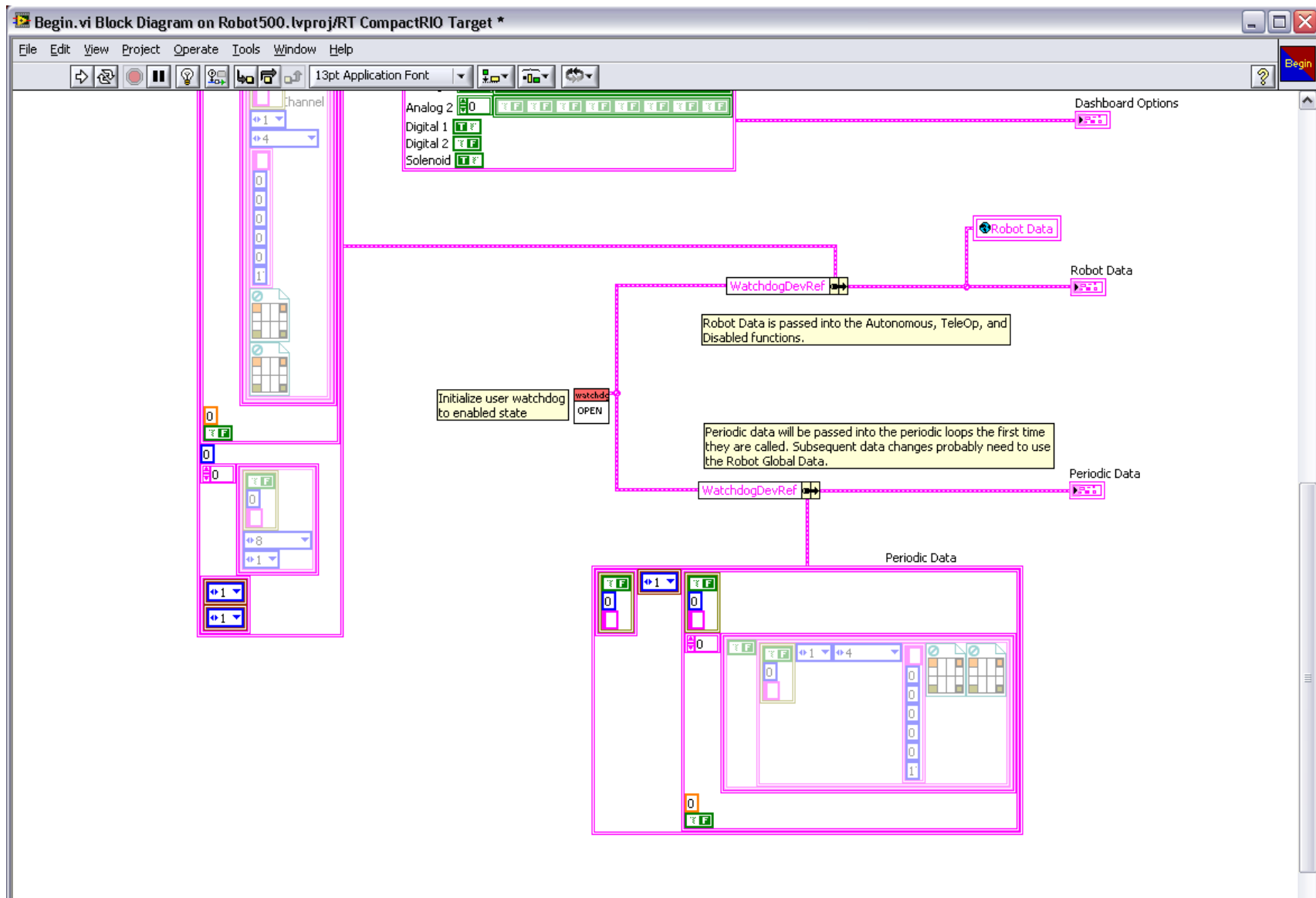
Main Program Loop



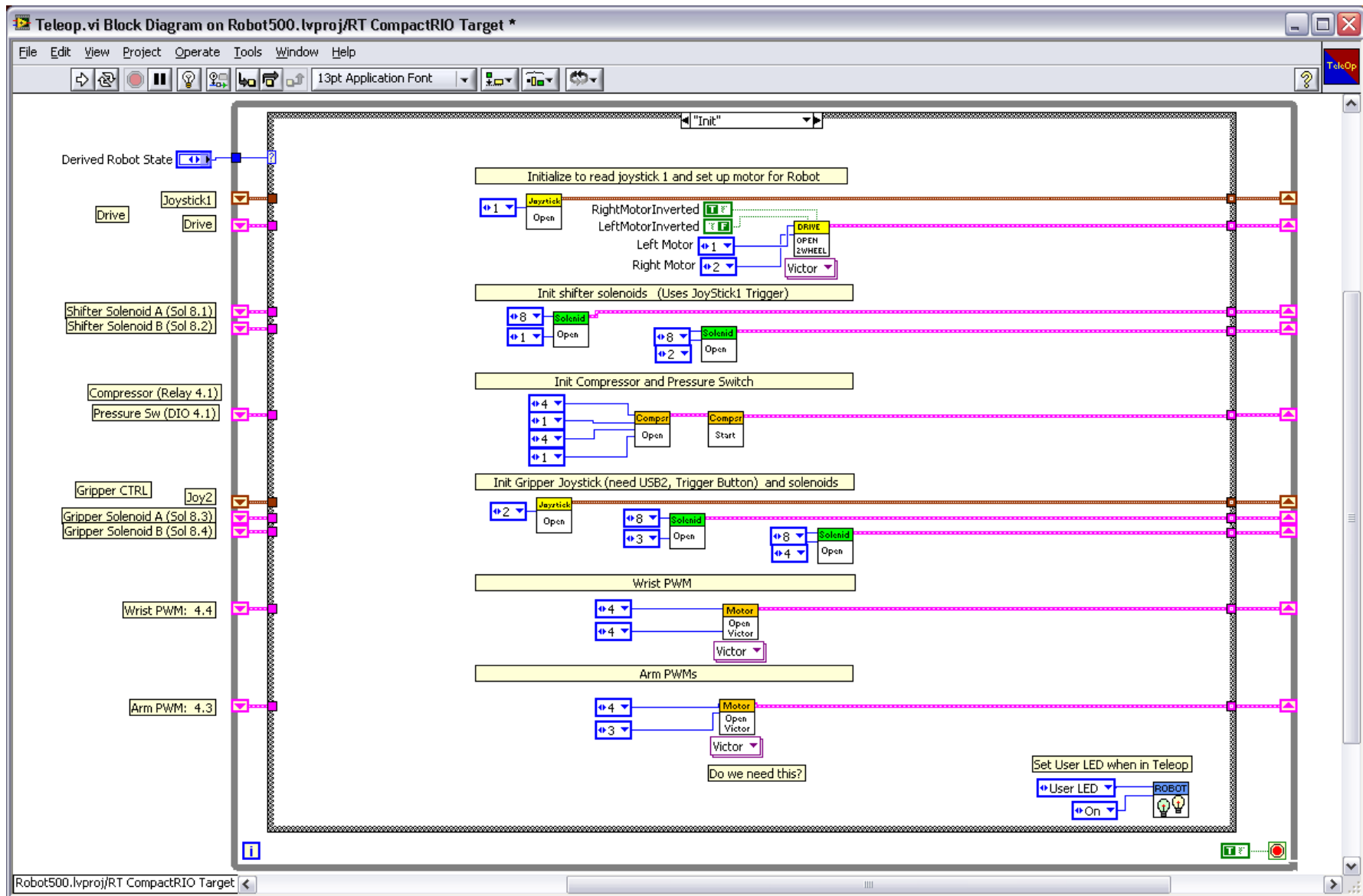
“Begin.VI” part 1:



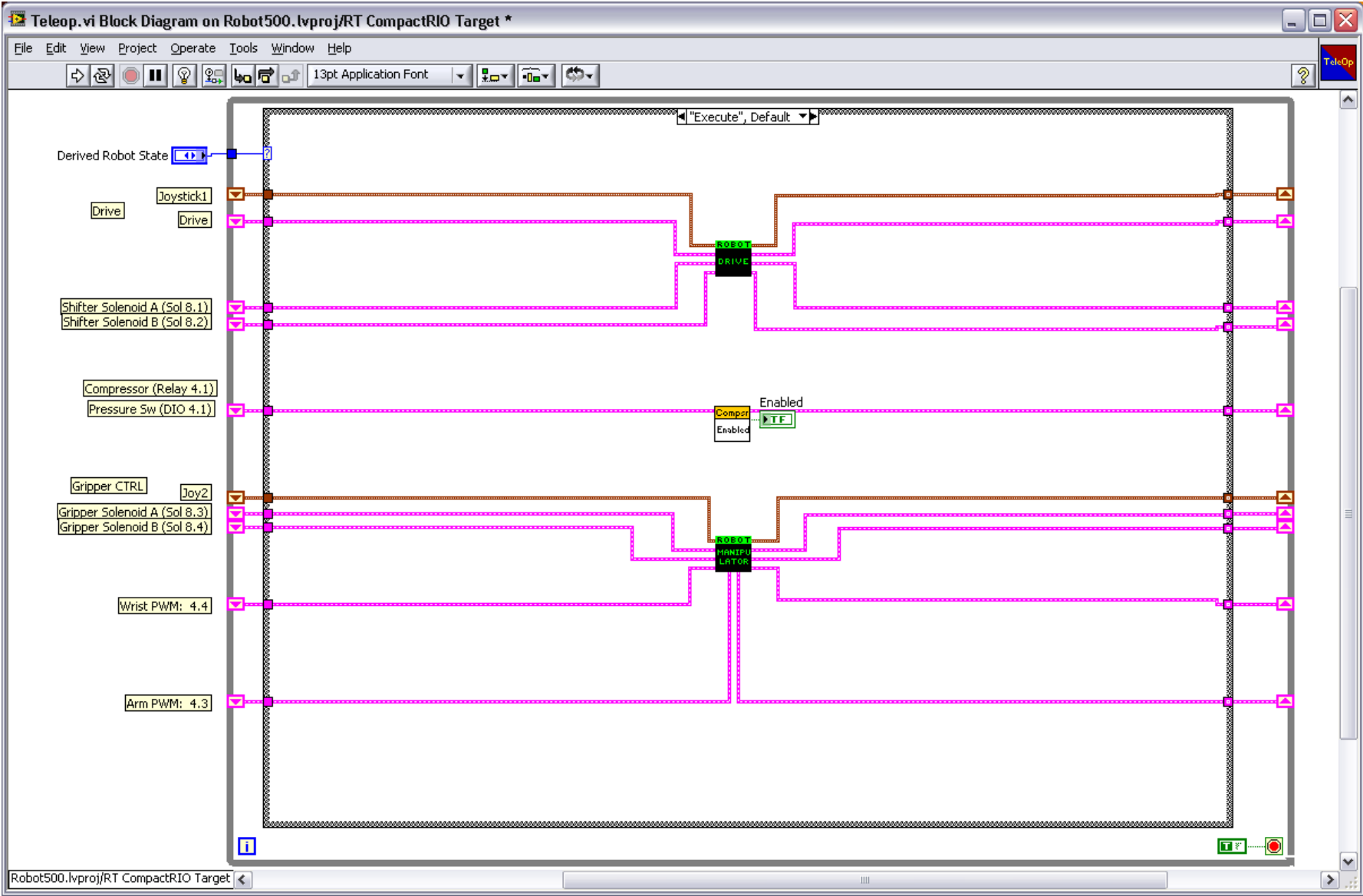
Begin.VI Part 2



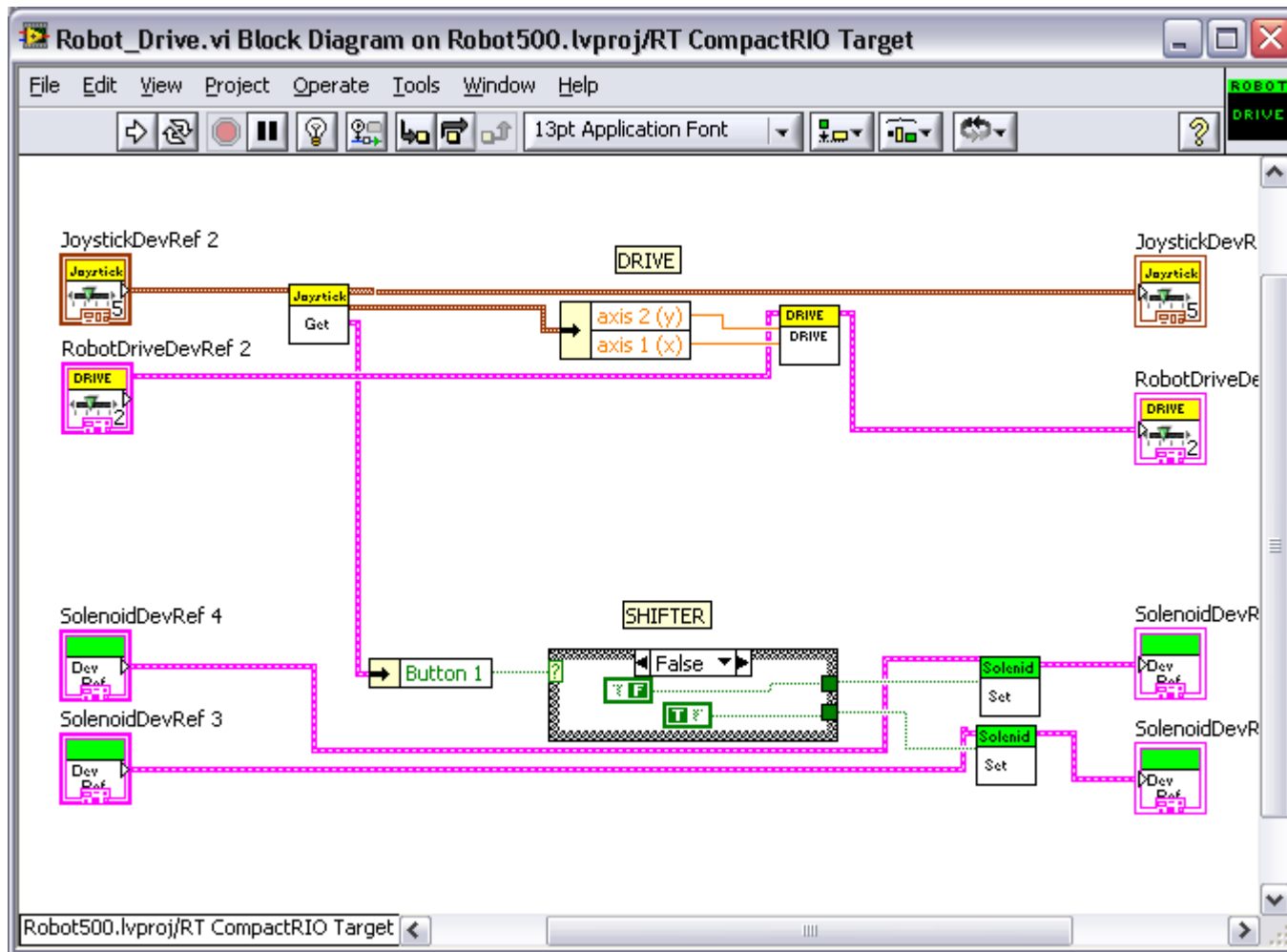
Teleop INIT



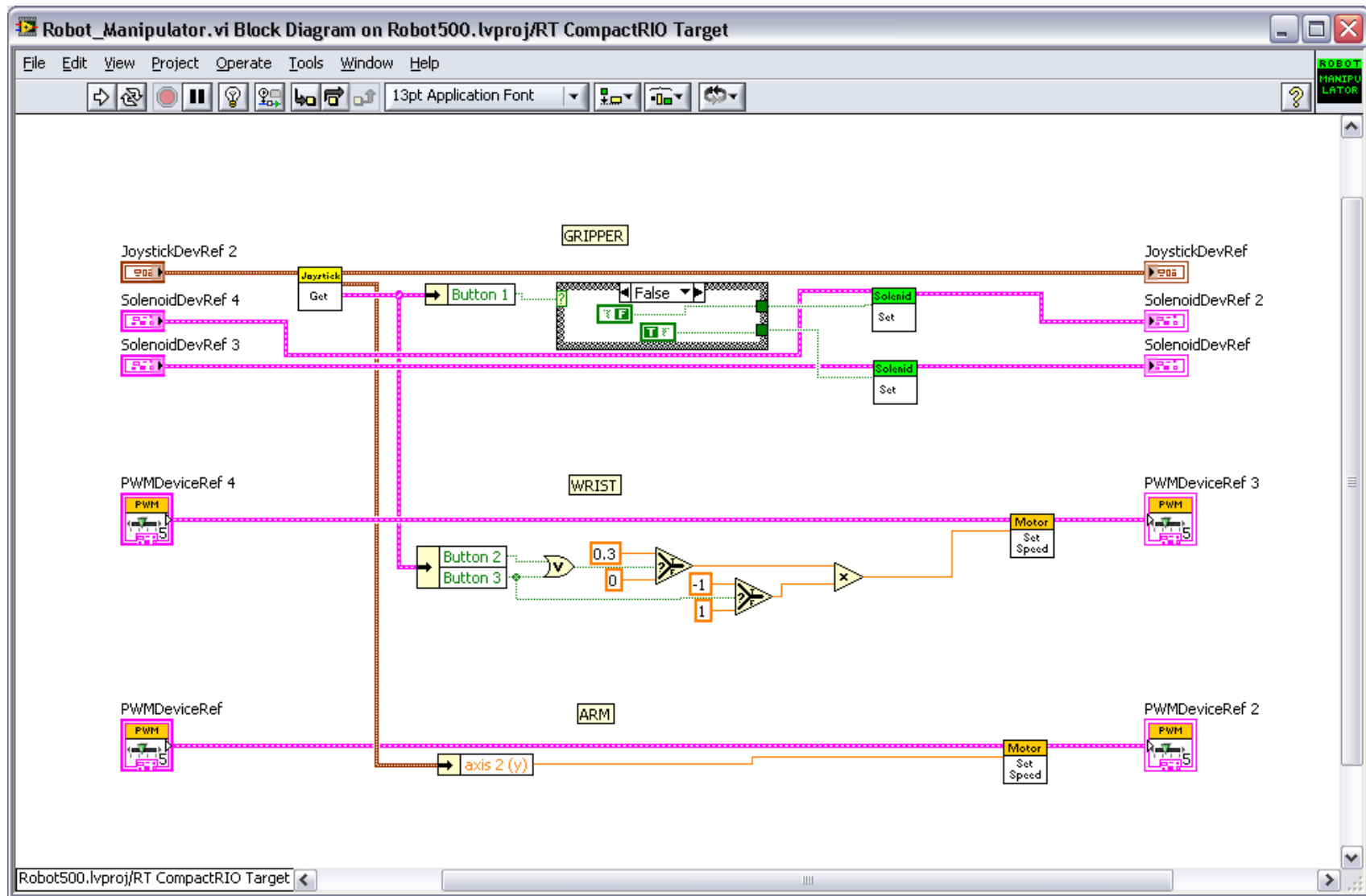
Teleop EXECUTE



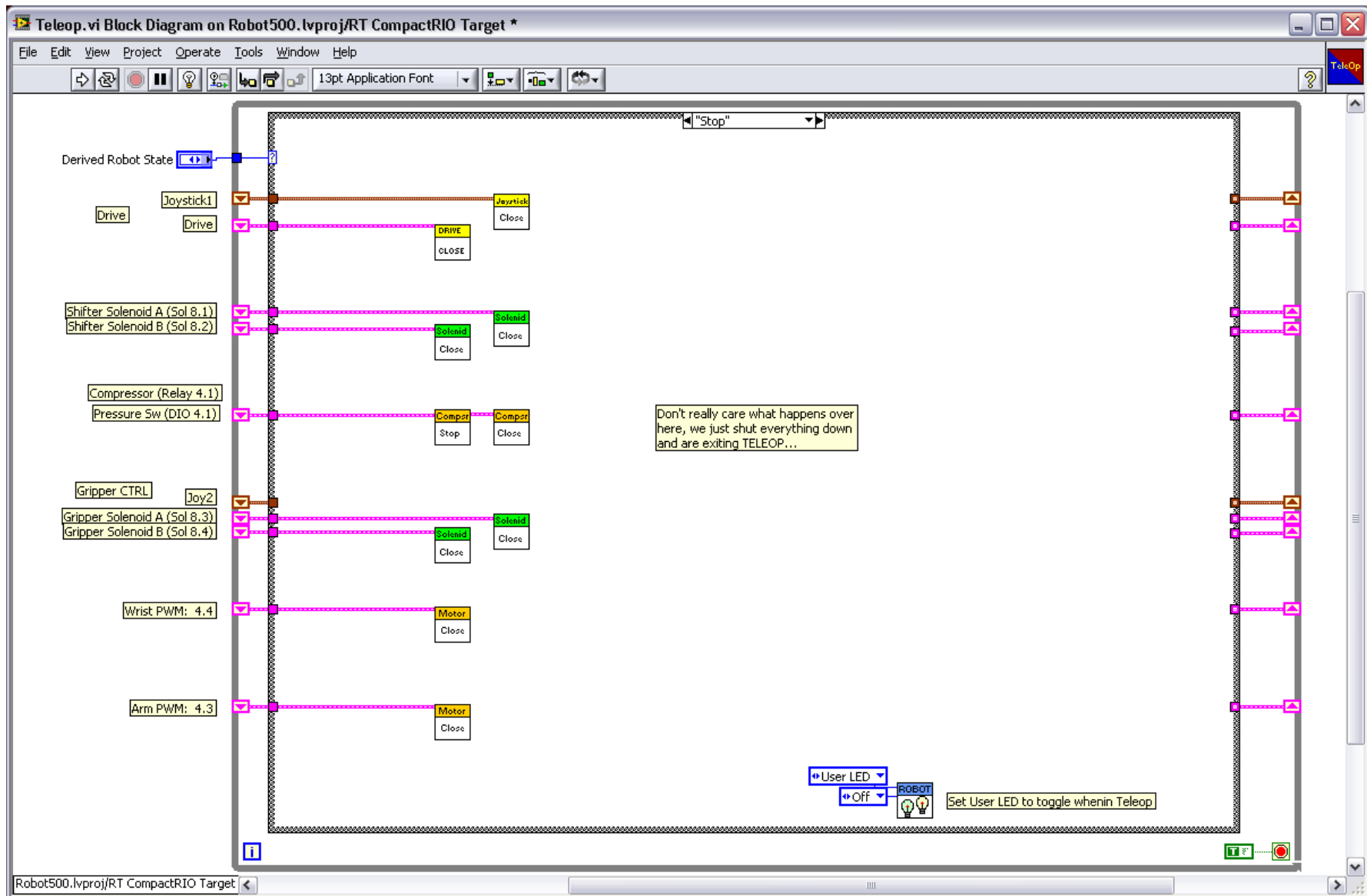
Robot_Drive.VI - This module controls the Motors and shifters. The Joystick Axis control the motor with the Y-Axis being the speed and the X-Axis being the turn rate, the trigger button controls the shifter. If the button is pressed, we apply FALSE and TRUE to the solenoids, else, we apply TRUE and FALSE. That's all it takes to drive the robot with a dual speed gearbox.



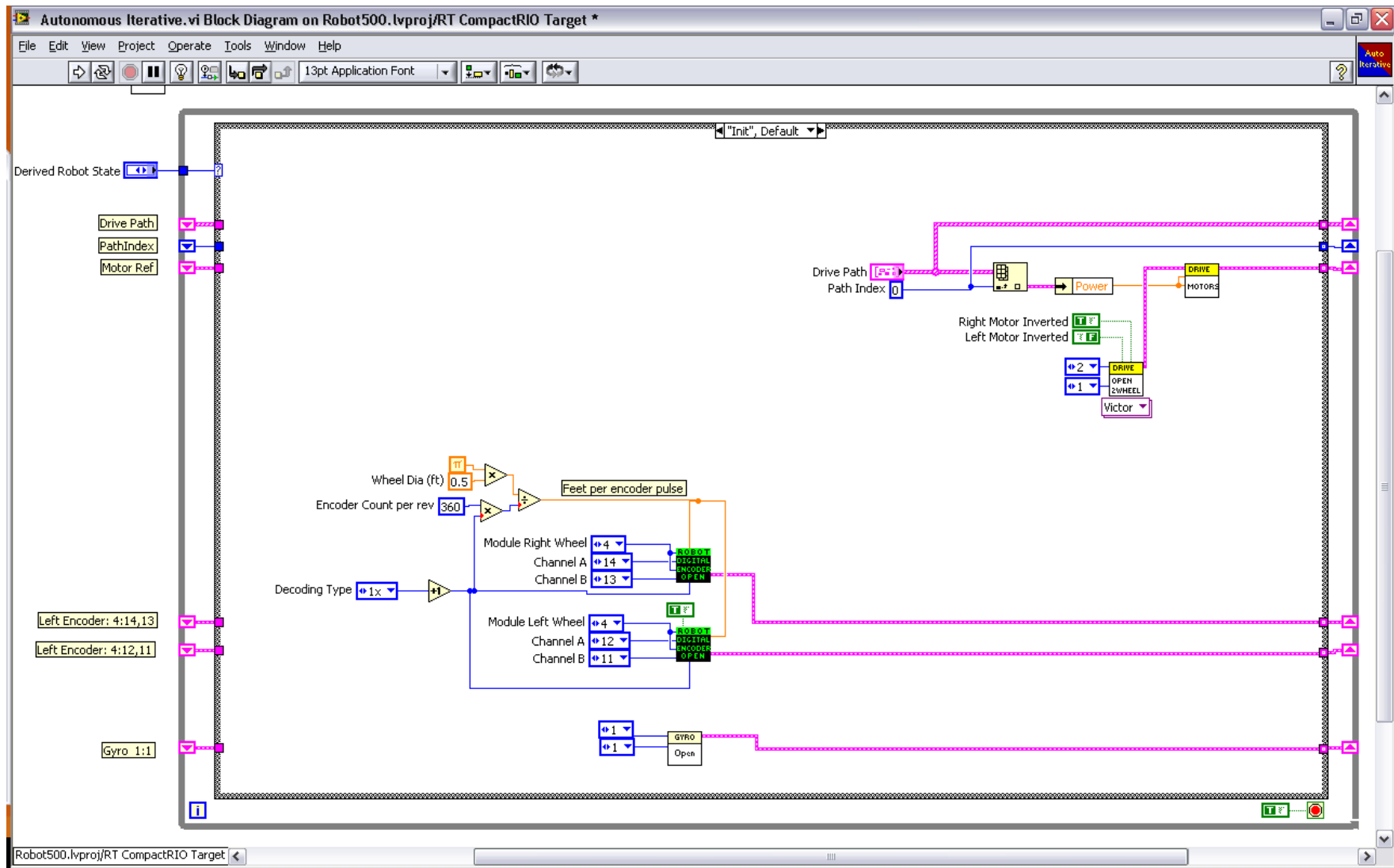
Manipulator.VI – Controls the Pneumatic Gripper, Motor Driven Wrist and Motor driven arm. Buttons are used to control the wrist and a joystick axis is used to control the arm (just to show variety).



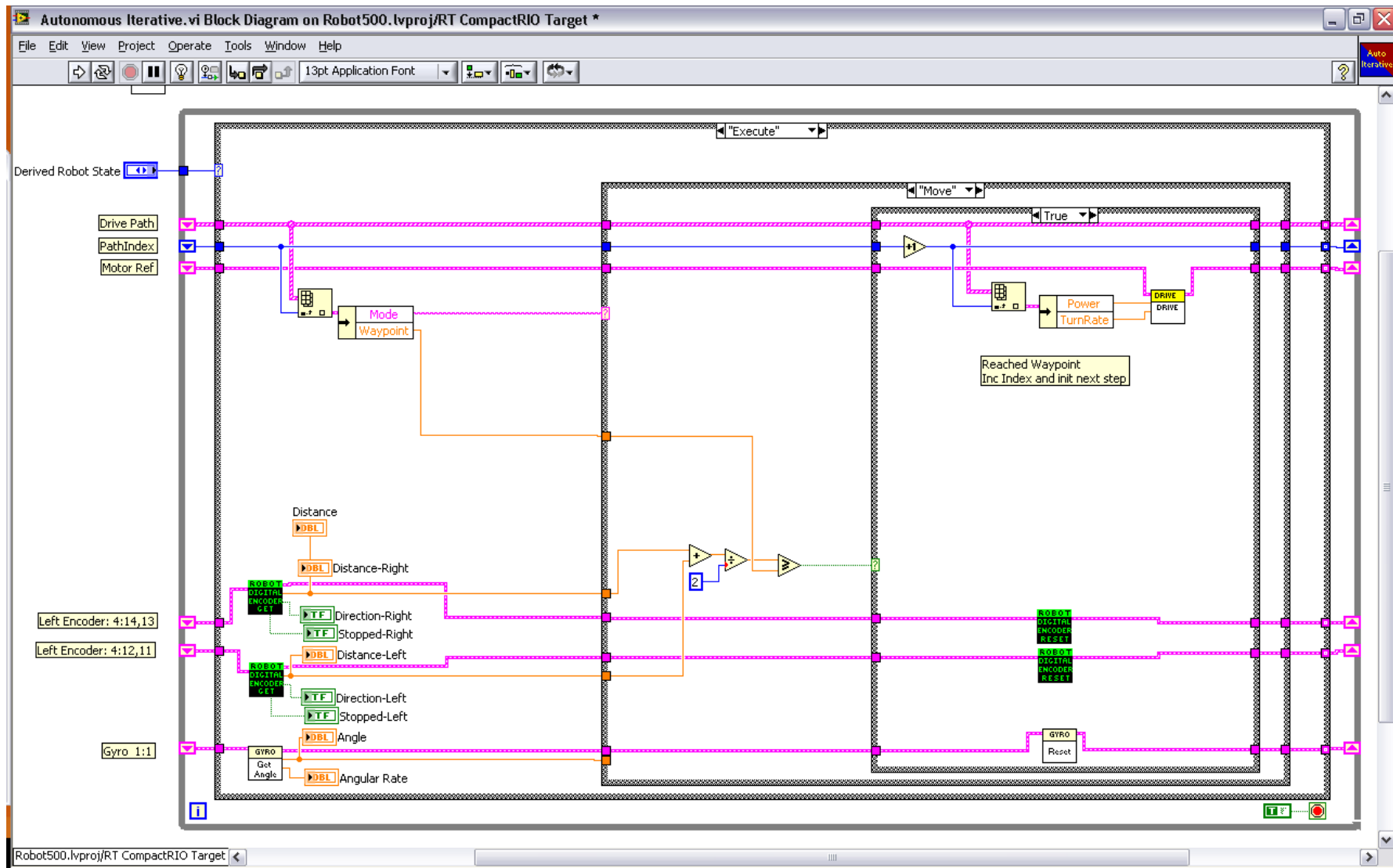
Teleop STOP



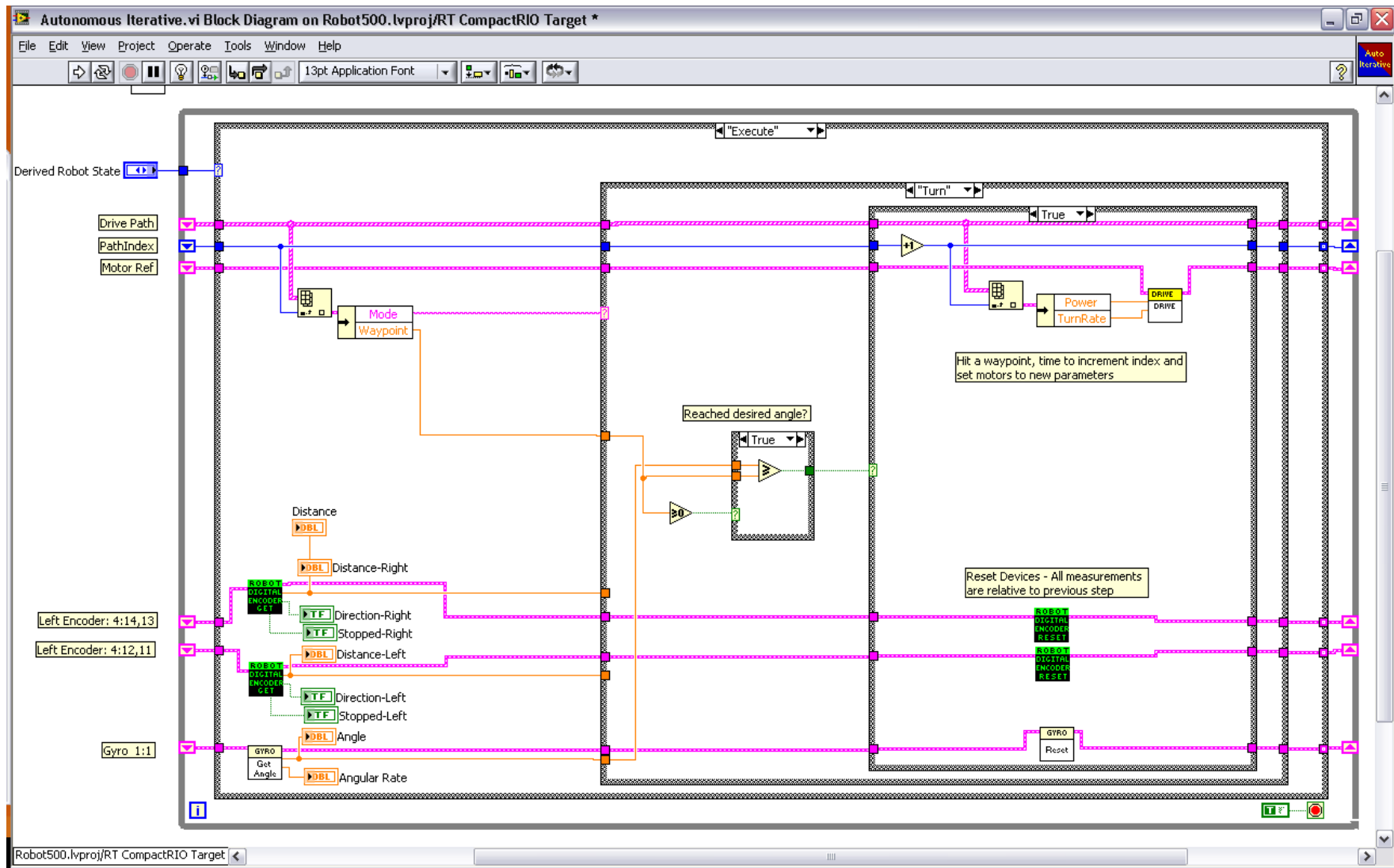
Auton: INIT



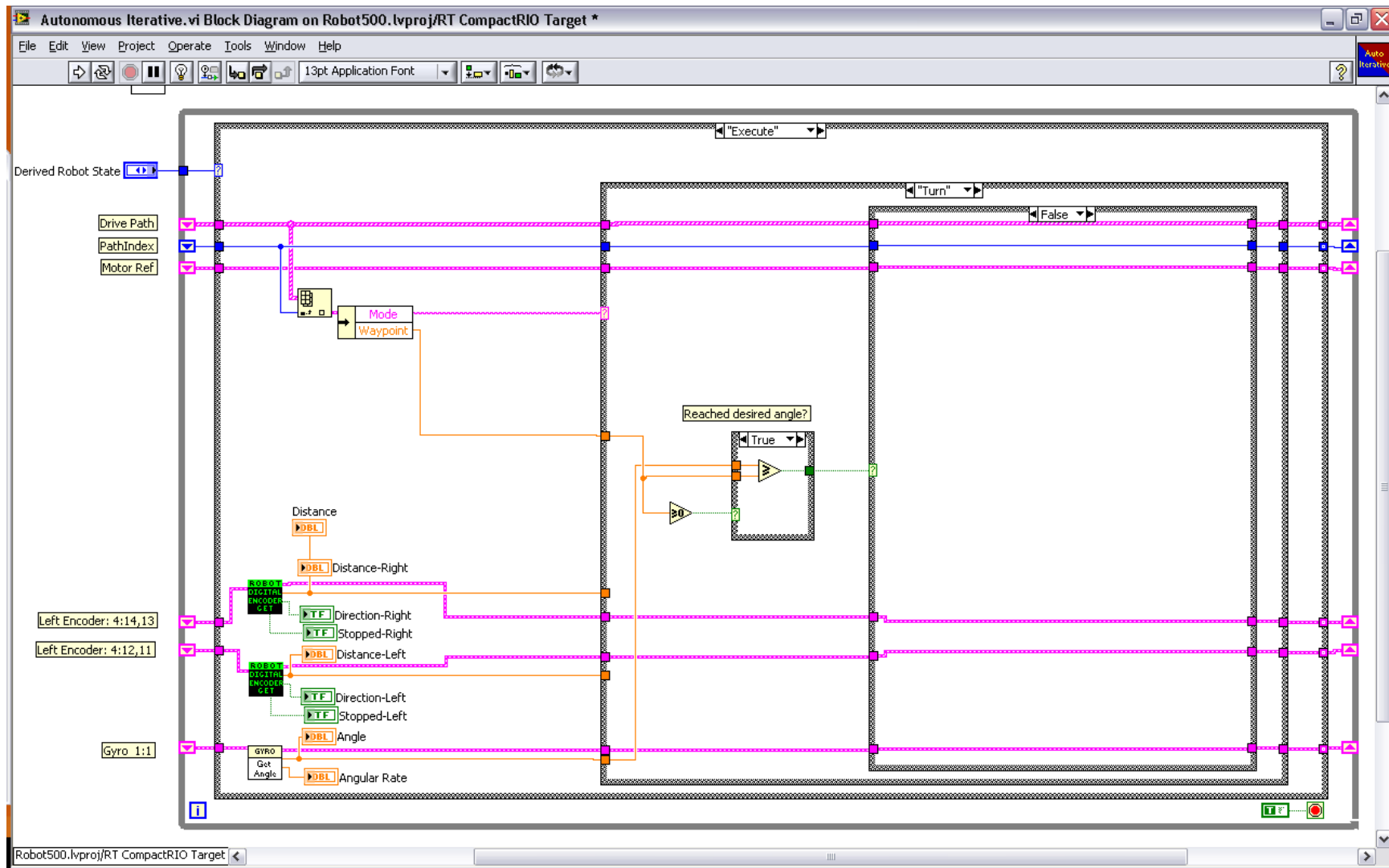
Auton: EXECUTE: "Move" - Waypoint reached



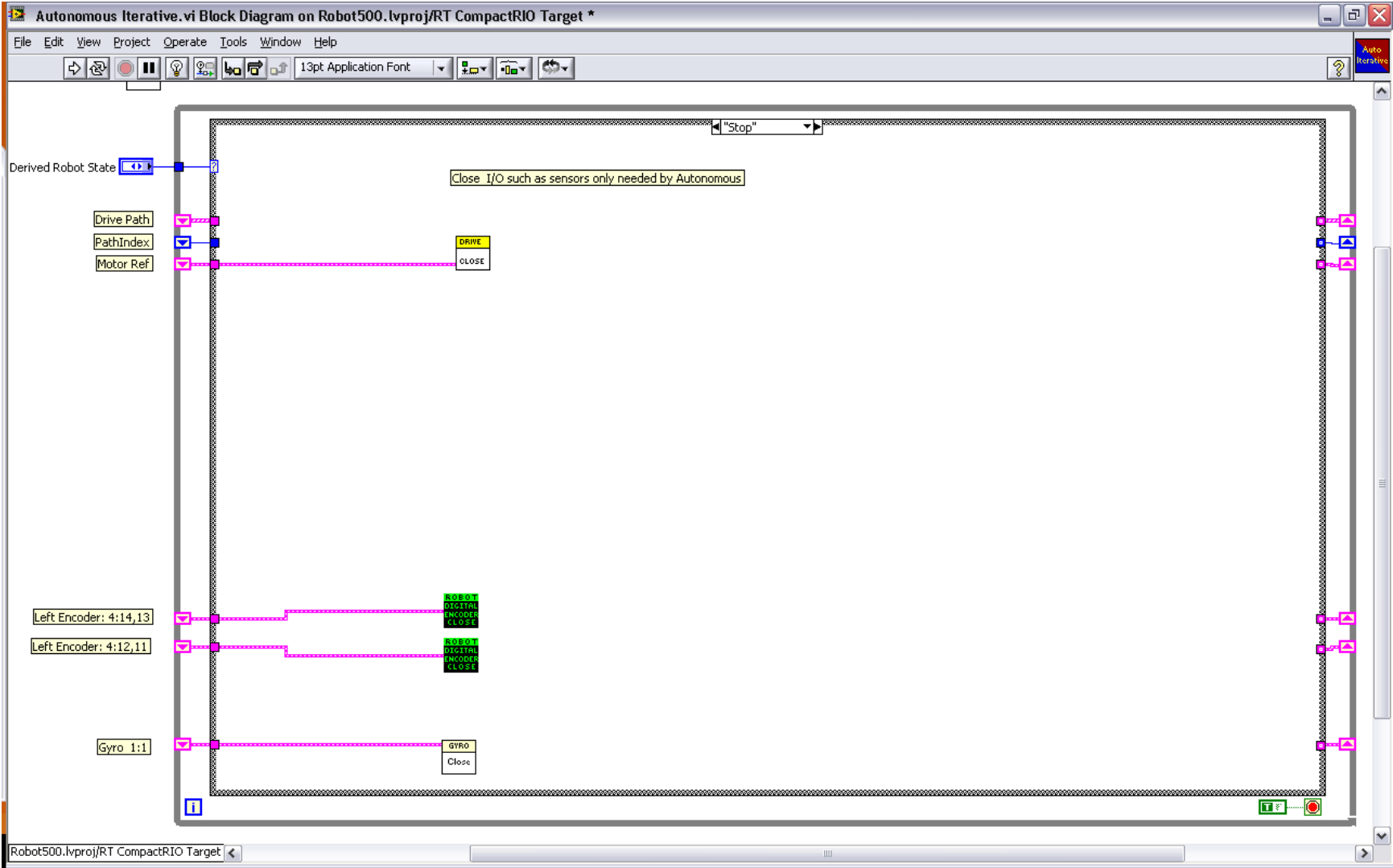
Auton: EXECUTE: "Turn" - Waypoint reached



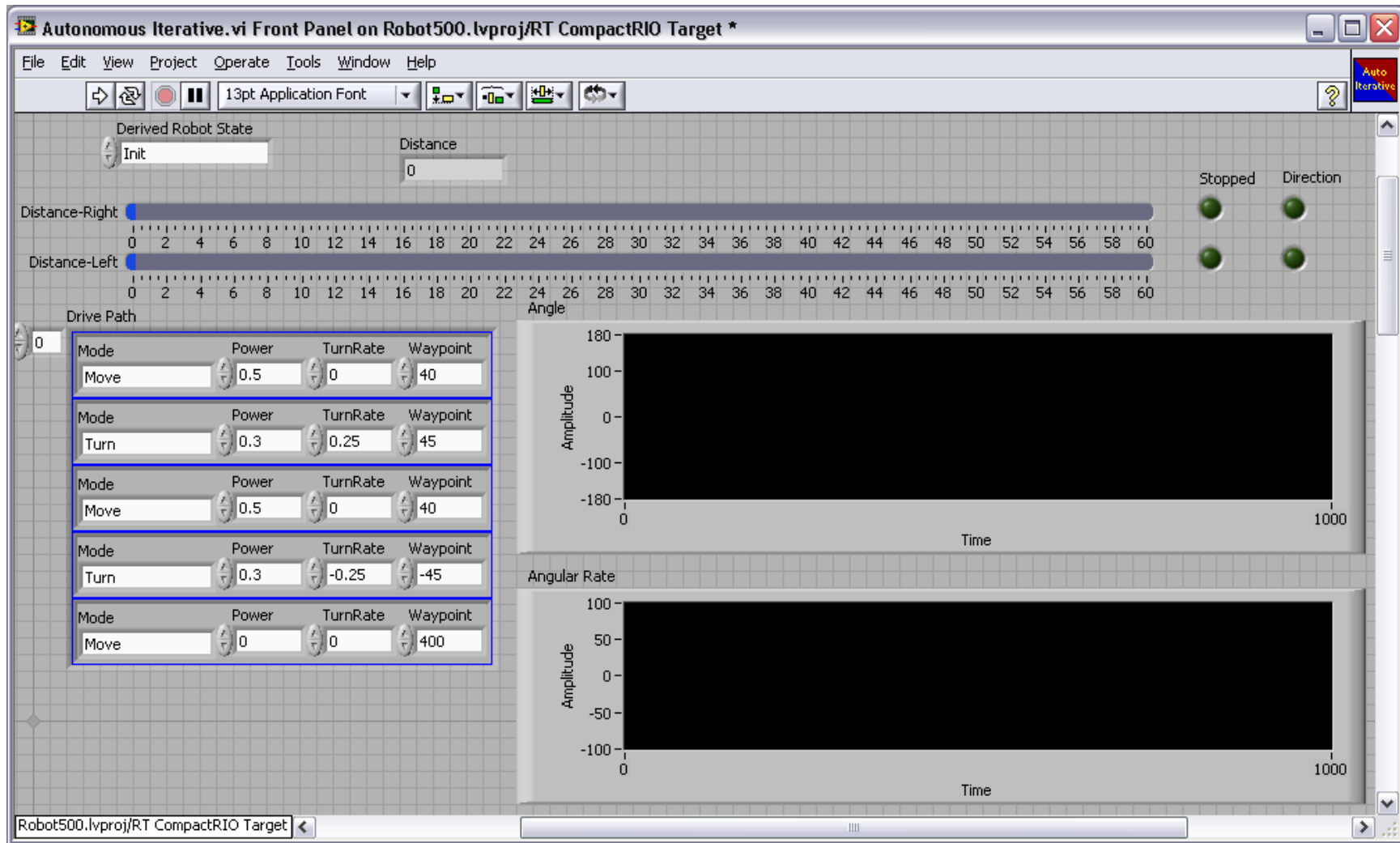
Auton: EXEUCTE: "Turn" - Waiting for waypoint



Auton: STOP



Auton Front Panel



Dashboard Front Panel

